



EASTERN SAN JOAQUIN GROUNDWATER AUTHORITY

August 9, 2017

A New Frontier

- Words of Encouragement
 - This is New for Everyone.
 - New JPA, New Board of Directors, New Legislation, New Planning Effort, New Process, New Normal, etc.
 - Innovate; Don't Reinvent the Wheel.
 - We're in this Together.

August 9th Agenda

- Discussion/Action Items:
 - Conflict of Interest Code
 - Bylaws
 - Consultant Services Agreement
- Workshop/Shirtsleeve Meeting:
 - Equitable Apportionment of GSP Development Costs

Conflict of Interest Code

- The Political Reform Act requires state and local government agencies to adopt conflict of interest codes.
- Possible Public Hearing Noticed for the August 9th Regular Meeting of the Authority Board of Directors
- Proposed Designated Positions
 - Members and Alternates of the Board;
 - Secretary;
 - Attorney;
 - Consultants.

Conflict of Interest Code

- Disclosure Categories
 - Investments in a business entity.
 - Interest in real property located within the boundaries of the Authority, or within a two-mile radius of the Authority.
 - Each source of gross income of \$500 or more (including loans) that is located in or doing business within the boundaries of the Authority.

Public Hearing

- Open the Public Hearing
- Receive Public Comment
- Close the Public Hearing
- Consider Adoption of the Authority's Conflict of Interest Code
 - See Draft Resolution in Agenda Packet

August 9th Agenda

- Discussion/Action Items:
 - Conflict of Interest Code
 - **Bylaws**
 - Consultant Services Agreement
- Workshop/Shirtsleeve Meeting:
 - Equitable Apportionment of GSP Development Costs

Presentation on Bylaws

August 9th Agenda

- Discussion/Action Items:
 - Conflict of Interest Code
 - Bylaws
 - **Consultant Services Agreement**
- Workshop/Shirtsleeve Meeting:
 - Equitable Apportionment of GSP Development Costs

GSP Funding Opportunity

- Grants Offered
 - Category 1 – DAC Implementation
 - Category 2 – GSP Preparation
 - Tier 1 – Critically Overdrafted – \$1.5M Max
 - Tier 2 – High and Medium Priority Basins – \$1.0M Max
 - 50% local cost share; DAC & SDAC waivers
- Grant Solicitation
 - Expected to open August 2017
 - Due to DWR ~ October 2017

Authority Direction to Staff

- Come back to the Board in August with a consultant services agreement.
- Work with the consultant in August and September to develop a work plan and grant application.
- Submit grant application in October.
- Concurrently, develop metrics in preparation for discussion on allocating costs.

Getting to the Question of Cost

How much will the GSP cost?

- What is the Scope of the GSP?
- What existing info do we have?
- How will GSAs engage with stakeholders and perform outreach?



How do we allocate the GSP's Cost?

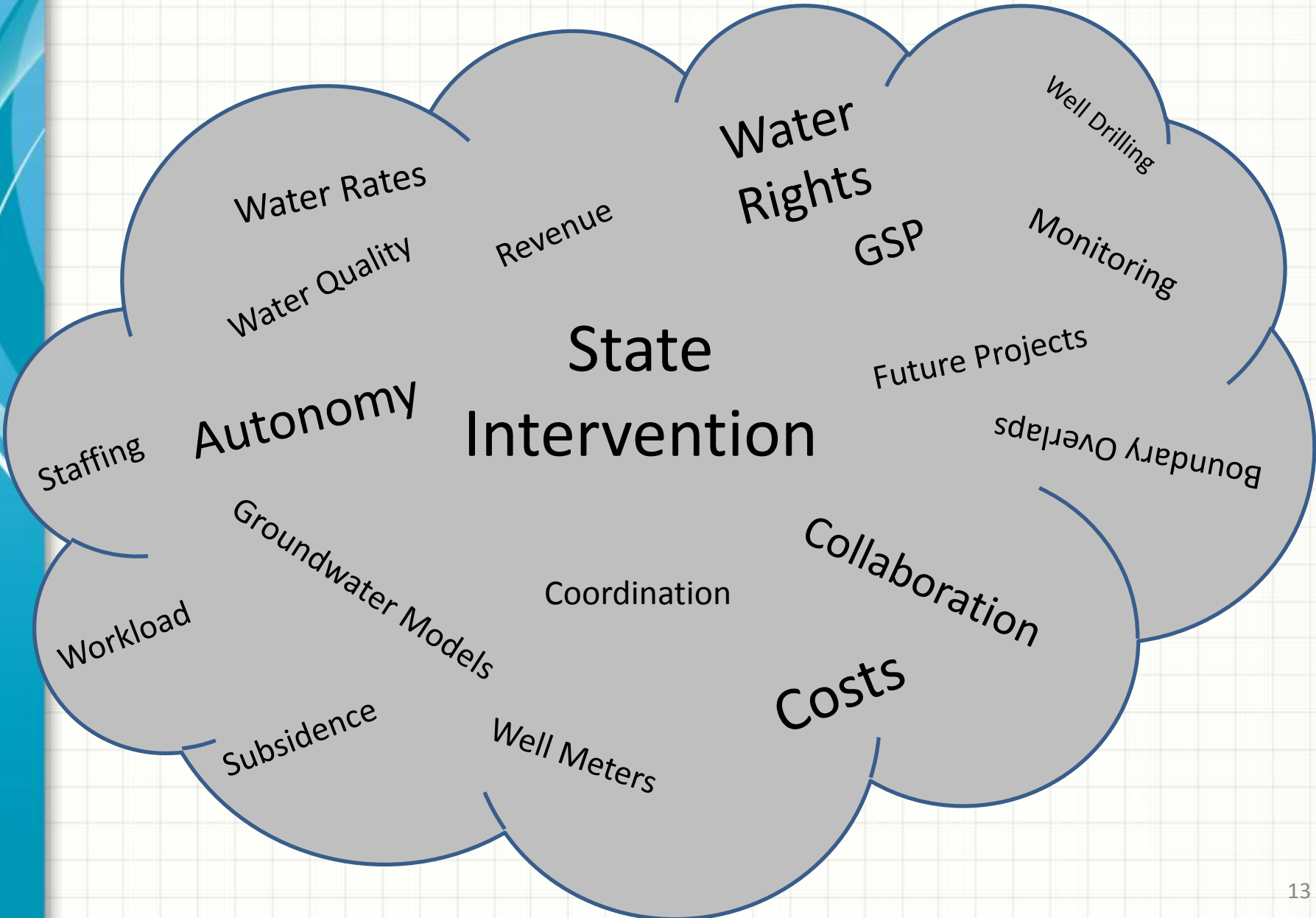
- How do we define equitable?
- What metrics do we use?
- Groundwater usage, population, acreage, depth to groundwater?



What's my GSA's share of the GSP?

- This is the question that we all have been asking ourselves since SGMA was signed into law.
- How should I budget for these expenditures?

Everyday is a cloudy day with SGMA



What is the Scope of the GSP?

- How complex and costly will DWR make the grant requirements?
- Can current and future groundwater pumping rates be sustained?
 - How will historical use be considered?
 - How will new uses be considered?
- What level of detail is needed by the community to achieve sustainability?
 - Can we manage with broad principles, or is detailed measurement and accounting needed?
- What actions are required to reach sustainability at the Subbasin and GSA levels?
- How will future SGMA administration activities and GSP actions be funded?
 - What are the GSA administration, management actions, projects, monitoring and reporting costs at the GSA and Subbasin levels?
- How do we most effectively and efficiently engage with Stakeholders?
 - Simple surveys, workshop discussions, public meetings, stakeholder forums, etc.

Consultant Selection Process

- GBA has Pre-Qualified Four (4) SGMA Consultants.
 - In 2015, RFQ Sent to 26 firms; 9 proposals received; 7 firms interviewed; 4 firms selected to be on-call.
- July 13, 2017 – Staff Sent Interest Request Letters to the 4 On-Call Firms.
- July 18, 2017 – Staff Received Letters of Interest from GEI, Stantec, and Woodard & Curran (RMC).
- July 26, 2017 – Authority Selection Committee Representing 12 GSAs Reached Consensus and Selected GEI Consultants.
 - Selection based on overall experience, previous work in Eastern San Joaquin Subbasin, and approach best met the needs of the Authority.

Consultant Tasks for GSP Scoping

- Task 1: Project Management and Coordination
- Task 2: Grant Strategy, Eligibility, and Guideline Updates
 - Review Final PSP
 - Determine Eligibility
- Task 3: Collect Compliance Documentation (Optional)
 - *completion of* Groundwater Management Plans
 - *inclusion in the* California Statewide Groundwater Elevation Monitoring (CASGEM) program
 - *completion of* Urban Water Management Plans and Agricultural Water Management Plans
 - *filing of* surface water diversion reports
 - *establishment of* water conservation (SBx7-7) targets
- Task 4: Authority Member Outreach
- Task 5: Meetings with ESJ Groundwater Authority
- Task 6: Grant Writing and Submittal

Need these a month
before grant submittal

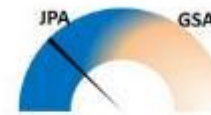
Proposed Schedule

- **August 9, 2017** – Approval of Agreement by JPA Board.
- **August 2017** – DWR publishes Final Proposal Solicitation Package
- **Mid-August 2017** – Notice to Proceed provided to GEI.
- **Late-August 2017** – SGMA questionnaire – distribute to Authority members.
- **September 13, 2017** – Workshop to discuss results of SGMA questionnaire.
- **September 2017** – Certifications for UWMPs, AgWMPs, surface water diversions, SBx7-7, etc. due.
- **September 27, 2017** – SGMA Ad-Hoc Working Group Discussion of Technical Issues.
- **October 11, 2017**
 - Final grant application approval by the Authority.
 - Possible early review by DWR
- **October 2017** – Submit grant application (9 weeks from release of Final PSP)

Proposed Simple Survey

- Survey is a Tool to Help Gauge Level of Effort for GSP Work Plan
- 20-25 Statements
- Sample statements
 - “Compliance with SGMA is a local, not state, responsibility”
 - “The subbasin is currently sustainable”
 - “Rainfall into the subbasin is mutually shared by all groundwater users”
- Simple Response
 - Agree – Disagree – Strongly Disagree responses
- Possibly Discuss at September Workshop Setting

Recycle Previous Work



Compliance Responsibility



Relative Cost

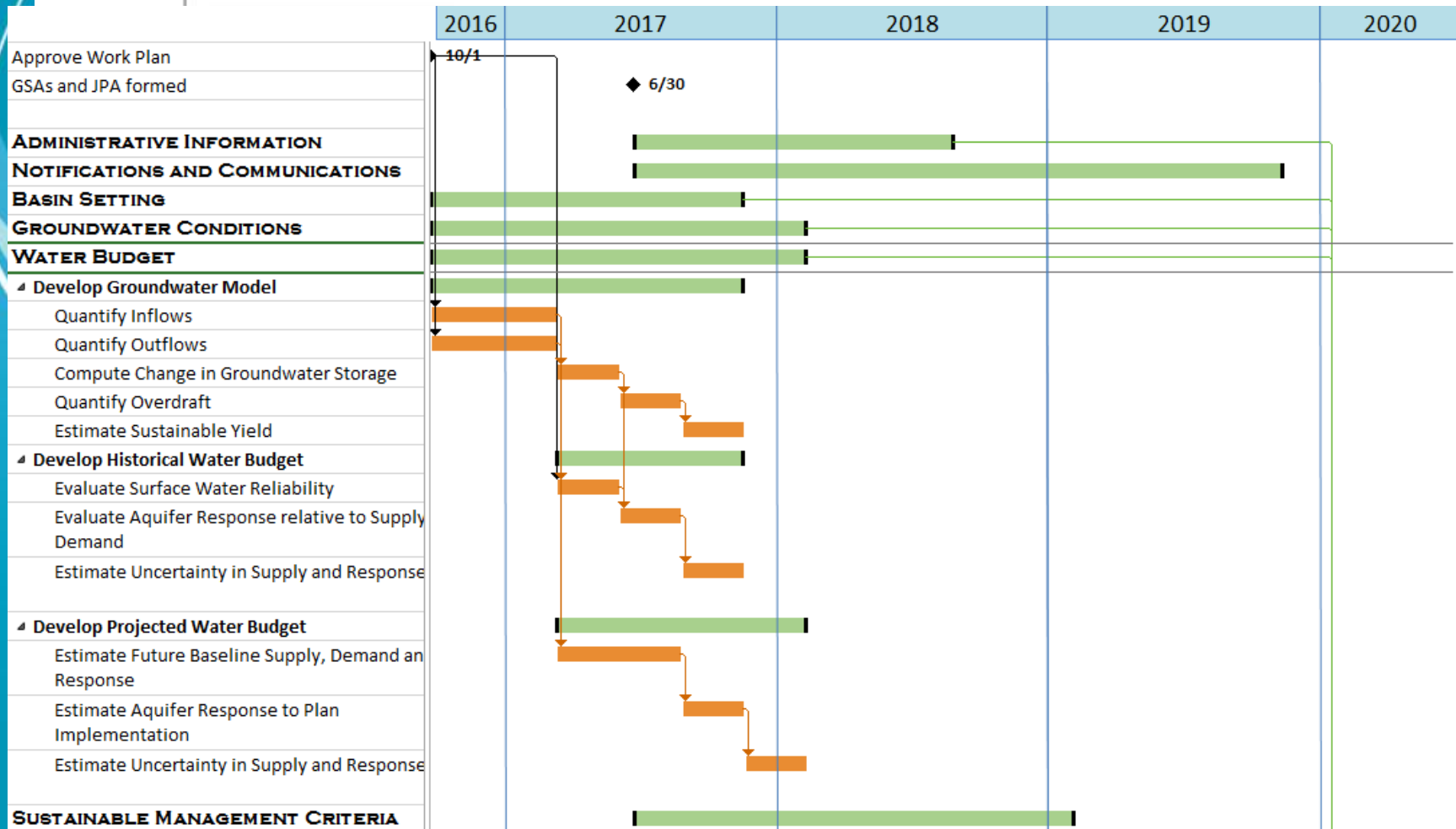


Labor Intensity



Specialty Expertise

Water Budget



Past Efforts

STOCKTON DELTA WATER SUPPLY PROJECT
 Final Program Environmental Impact Report
 State Clearinghouse No. 2003112060

Prepared for:
 City of Stockton

October 2005



FREEPORT REGIONAL WATER AUTHORITY

HOME | ABOUT US | SERVICES | CONTACT | NEWS | ARCHIVE | EMPLOYMENT | PUBLIC AFFAIRS | CONTACT US

OUR PROJECT





The Project Regional Water Project (RWP) is a water treatment facility located in Freeport, California. The project is designed to supply water to the California Delta and is scheduled to be completed in the year 2015 in the United States.

The RWP is a key component of the Delta Water Treatment Plant (DWTP) project.


2014 Eastern San Joaquin
 Integrated Regional Water Management Plan Update

Eastern San Joaquin County Groundwater Basin Authority

June 2014

Our Voice Our Mission




 **Farmington**
 Groundwater Recharge Program

Making Water a Crop for Eastern San Joaquin County's Future



MORE WATER PROJECT
A Regional Water Storage and Conjunctive Use Project



Adopted Authority Budget

- Direct Expenses
 - Meeting Location
 - Postage
 - Envelopes
 - Misc.
 - Staff Support
 - Attorney Support
 - Website
 - GSP Grant Support (Consultant)
 - GSP Cost-share
- \$150,000 – Zone 2 Initial Contribution
 - Portion of \$85,000 – 17 Members at \$5,000 ea
 - \$???,000 – 17 Members

Staff Recommendation

- Approve Agreement with a Not to Exceed Total Cost of \$43,000 (Base Cost \$35,000).
- Authorize and Direct the Chair to Sign the Agreement.
- Issue Notice to Proceed.

August 9th Agenda

- Discussion/Action Items:
 - Conflict of Interest Code
 - Bylaws
 - Consultant Services Agreement
- **Workshop/Shirtsleeve Meeting:**
 - **Equitable Apportionment of GSP Development Costs**

Option #1 vs. Option #2

- Option #1

Board conducts business first and then moves into “shirtsleeve” session with other participants.

Discussion may include Board alternates, staff, non-governmental entities, and the public.

- Option # 2

Board strategically and as needed, establishes advisory committees to meet at another time for specific items.

Brown Act applies to standing committees.

Option #1 vs. Option #2

- Option #1

A quorum may be present to deliberate agenda items not yet ready for action.

- Option #2

A quorum of the Board may not be present at an advisory committee meeting.

- Both Options

Facilitation may be available, pending funding from DWR and also would be designed into specific GSP processes.

Workshop Ground Rules

- **Electronic courtesy.** i.e. Cell Phones and Mobile Devices.
- **Stay focused on the charge and deliverables.**
- **Sit at the table only if you are the member or alternate representing a designated agency/organization.**
- **Raise your hand if you wish to speak. Use common conversational courtesy.**
- **Treat each other with respect.**
- **All ideas and points have value.**
- **Avoid editorials.**
- **Honor time.**
- **Beware of the 3 C's Disease.**
- **Be comfortable.**
- **Humor is welcome.**

Setting the Tone for Healthy Dialogue

- What are our common interests in developing a Single GSP?
 - Reduce the Local Cost-share amount while still delivering a compliant GSP.
 - Realize efficiencies in cost and effort.
 - Ensure coordination among GSAs.
 - Establish a single set of data standards, metrics, and GSP assumptions Subbasin-wide.
 - Meet DWR's preferences for a single point of contact for the Eastern San Joaquin Subbasin.
 - Reach consensus on decisions as the Eastern San Joaquin Groundwater Authority.

Metrics for Discussion

How do we allocate the GSP's Cost?

- How do we define equitable?
- What metrics do we use?
- Groundwater usage, population, acreage, depth to groundwater?

- Acreage
- Population
- Some Groundwater Usage Related Metric
- Other

For Discussion Purposes Only

GSA Acreage Table

	Groundwater Sustainability Agency	GSA Acres	%
1	Linden County Water District	303	0.04%
2	Lockeford Community Services District	787	0.10%
3	San Joaquin County GSA No. 2 (Cal Water)	6,851	0.89%
4	City of Lathrop	7,654	0.99%
5	City of Lodi	8,957	1.16%
6	City of Manteca	13,387	1.73%
7	South Delta Water Agency	17,932	2.32%
8	Woodbridge Irrigation District	29,419	3.81%
9	Oakdale Irrigation District	31,452	4.07%
10	City of Stockton	39,331	5.09%
11	San Joaquin County GSA	50,694	6.57%
1	Central Delta Water Agency	52,175	6.76%
2	South San Joaquin GSA	63,864	8.27%
3	Central San Joaquin Water Conservation District	73,166	9.48%
4	Stockton East Water District	100,603	13.03%
5	Eastside GSA	126,621	16.40%
6	North San Joaquin Water Conservation District	148,976	19.29%
	Totals	772,171	100%

For Discussion Purposes Only

GSA Population Table

	Groundwater Sustainability Agency	GSA Population	%
1	Linden County Water District	1,682	0.25%
1	Central Delta Water Agency	2,086	0.31%
2	South Delta Water Agency	2,886	0.44%
3	Lockeford Community Services District	2,917	0.44%
4	Woodbridge Irrigation District	5,230	0.79%
5	Central San Joaquin Water Conservation District	5,874	0.89%
6	Oakdale Irrigation District	7,022	1.06%
7	Eastside GSA	9,598	1.45%
8	City of Lathrop	18,351	2.77%
9	North San Joaquin Water Conservation District	20,017	3.02%
10	San Joaquin County GSA	29,292	4.42%
11	Stockton East Water District	31,355	4.73%
12	South San Joaquin GSA	38,212	5.76%
13	San Joaquin County GSA No. 2 (Cal Water)	48,820	7.36%
14	City of Lodi	63,469	9.57%
15	City of Manteca	69,721	10.51%
16	City of Stockton	306,538	46.23%
	Totals	663,070	100%

For Discussion Purposes Only

GSA GW Metric Table

	Groundwater Sustainability Agency	GW Usage	%
1	Linden County Water District	?	?
1	Central Delta Water Agency	?	?
2	South Delta Water Agency	?	?
3	Lockeford Community Services District	?	?
4	Woodbridge Irrigation District	?	?
5	Central San Joaquin Water Conservation District	?	?
6	Oakdale Irrigation District	?	?
7	Eastside GSA	?	?
8	City of Lathrop	?	?
9	North San Joaquin Water Conservation District	?	?
10	San Joaquin County GSA	?	?
11	Stockton East Water District	?	?
12	South San Joaquin GSA	?	?
13	San Joaquin County GSA No. 2 (Cal Water)	?	?
14	City of Lodi	?	?
15	City of Manteca	?	?
16	City of Stockton	?	?
	Totals	?	?

For Discussion Purposes Only

Formulas for Discussion

How do we allocate the GSP's Cost?

- How do we define equitable?
- What metrics do we use?
- Groundwater usage, population, acreage, depth to groundwater?

Possibilities:

- % Based on Acreage;
- % Based on Population;
- % Based on Some GW Usage Related Metric;
- % Other Metric;
- Equal Shares (All or Part ÷ among all 17 GSAs);
- A Combination of one or more metrics.

For Discussion Purposes Only





EASTERN SAN JOAQUIN GROUNDWATER AUTHORITY

www.ESJGroundwater.org

www.GBAWater.org

www.SJWater.org

www.SJCleanWater.org

www.SJCSavewater.org

