



**EASTERN SAN JOAQUIN  
GROUNDWATER AUTHORITY**

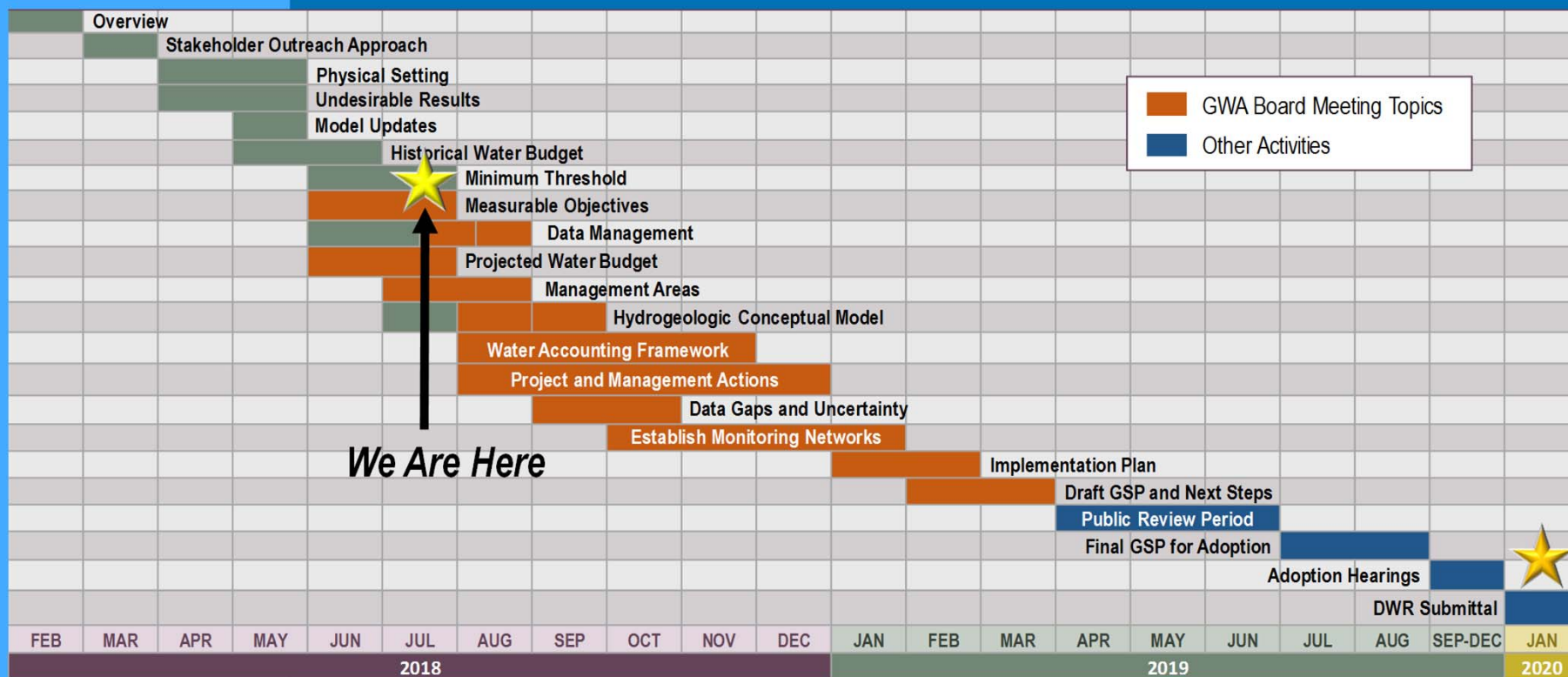
# **GWA Board Meeting July 11, 2018**

# Agenda



- Roadmap Update and Project Schedule
- Outreach & Groundwater Sustainability Workgroup Update
- GSP Update
- Hydrogeologic Conceptual Model
- DWR Update
- August Agenda Items
- Facilitator Transition

# GSP Topics & Project Schedule





# Outreach & Groundwater Sustainability Workgroup Update



# Ways to Get Involved



EASTERN SAN JOAQUIN  
GROUNDWATER AUTHORITY

Attend GW  
Sustainability  
Workgroup  
meetings as  
an observer

Participate in first  
Public Meeting  
(August 29, 2018  
@ 6:30PM,  
Robert J. Cabral  
Agricultural  
Center)

Attend GWA  
Board or  
Advisory  
Committee  
meetings  
(monthly)

# Ways to Stay Informed



•Website:  
•Visit  
esjground  
water.org

•Sign up  
for  
electronic  
updates at  
esjground  
water.org

•Watch for  
information from  
GSA, Advisory  
Committee and  
Workgroup  
members

Attend  
open-  
forum  
meetings

Request  
presentation  
to community  
group

# Groundwater Sustainability Workgroup Update



**EASTERN SAN JOAQUIN  
GROUNDWATER AUTHORITY**

1810 E. Hazelton Avenue  
P. O. Box 1810  
Stockton, CA 95201

(209) 466-3089  
ESJgroundwater@sjgov.org  
esjgroundwater.org

**Eastern San Joaquin Groundwater Authority Groundwater Sustainability Workgroup**  
**July 10, 2018**  
**4 – 5:30 p.m.**  
**Robert J. Cabral Agricultural Center**  
**2101 E. Earhart Ave., Stockton, CA**  
**Calaveras Room**

## **Agenda**

- I. Welcome
- II. Comments on Meeting Notes
- III. Workgroup Committee Role and Major GSP Topics
- IV. Background on Groundwater Conditions
- V. Brainstorming: What Does Sustainability Look Like in the ESJ Subbasin?
- VI. Announcements
  - a. First public meeting: August 29, 2018 6:30 p.m., room TBD, Robert J. Cabral Agricultural Center
  - b. Next Workgroup meeting date: August 15, 4-5:30, room TBD, Robert J. Cabral Agricultural Center
- VII. Other topics
  - a. Non-agenda items
  - b. Public comment



**GSP Update**



# Reminder – How do the Pieces Fit Together?



Document Potential Undesirable Results for Each Sustainability Indicator

Identify Spatially Representative Minimum Thresholds

Identify Appropriate Monitoring / Measurement Locations throughout Subbasin

Develop Measurable Objectives above Each Minimum Threshold

# Reminder: Six Sustainability Indicators to be Addressed



Chronic lowering of groundwater levels indicating a significant and unreasonable depletion of supply



Significant and unreasonable degraded water quality



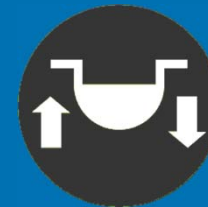
Significant and unreasonable reduction of groundwater storage



Significant and unreasonable land subsidence

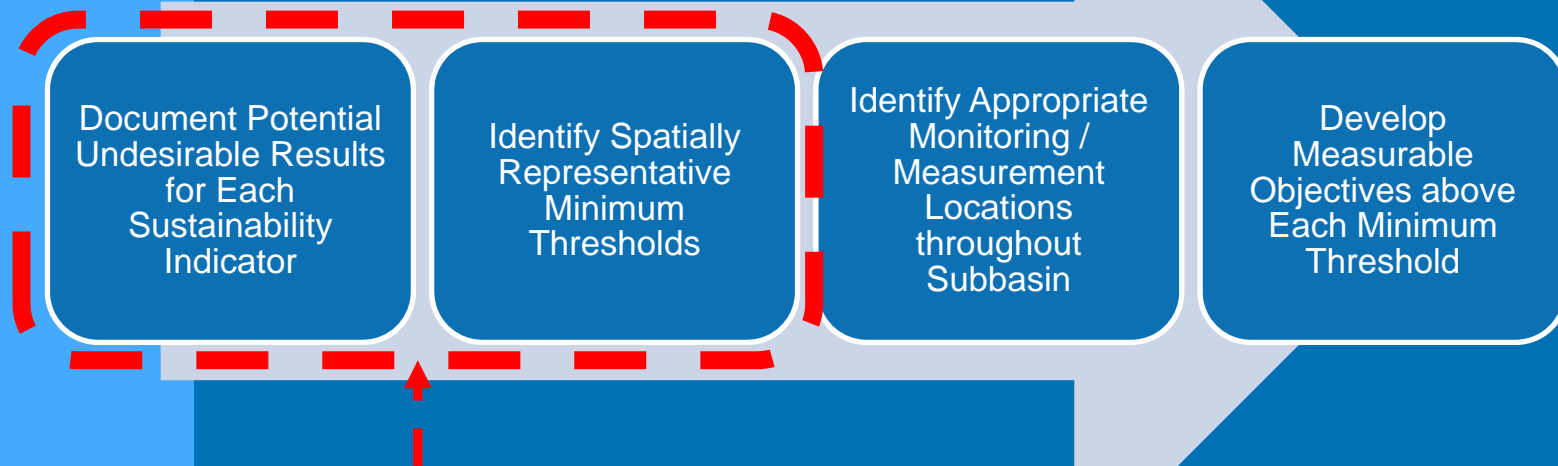


Significant and unreasonable seawater intrusion



Depletions of interconnected surface water that have significant and unreasonable adverse impacts on beneficial uses of the surface water

# Where are we now?



**We are here**

# Major Plan Focus Areas



- Working through Advisory Committee and Groundwater Sustainability Workgroup to:
  1. Develop concept of what sustainability means for the Subbasin and identify high priority values around groundwater
  2. Identify undesirable results occurring now or in the past
  3. Develop minimum thresholds for each sustainability indicator

# Sustainability Indicators Update

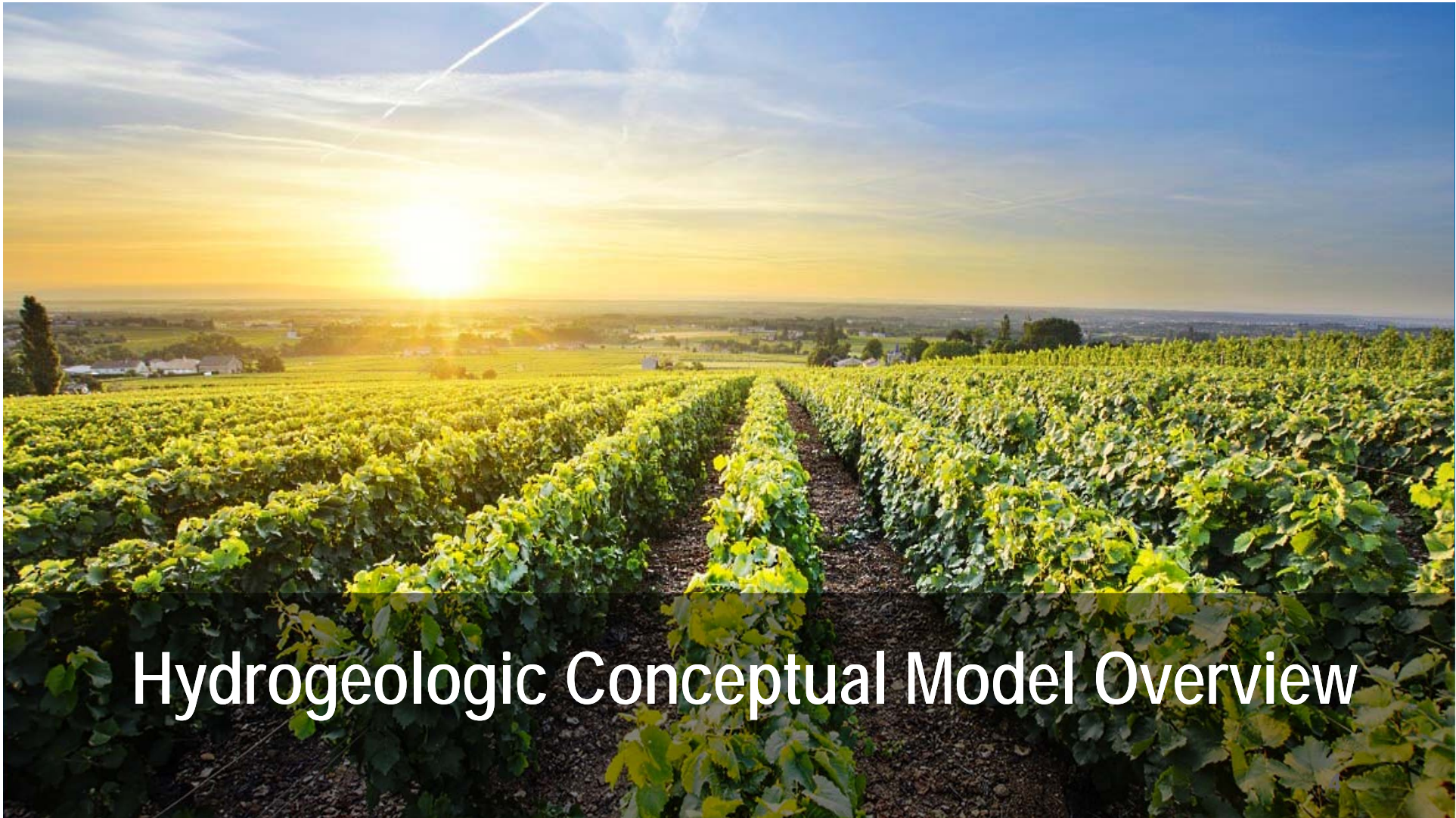


- Progress has been made on approach for developing minimum thresholds all six sustainability indicators
- Groundwater elevations will be the most important thresholds for the Subbasin – we started with those, and they will require the most work
  - Developed preliminary comparison of current and historical low groundwater elevations
  - Discussing undesirable results with GSAs and stakeholders to consider minimum thresholds to propose
  - Next steps: make refinements based on GDE information and subregional conditions
  - Reconcile varying thresholds across GSAs

# Sustainability Indicators Discussed, cont'd.



- Other Indicators:
  - Total Storage – no thresholds proposed
  - Seawater intrusion – no thresholds proposed
  - Water Quality – advisory committee considering potential approaches
  - Land Subsidence – advisory committee considering potential approaches
  - Depletion of Interconnected Surface Water – advisory committee considering potential approaches



# Hydrogeologic Conceptual Model Overview

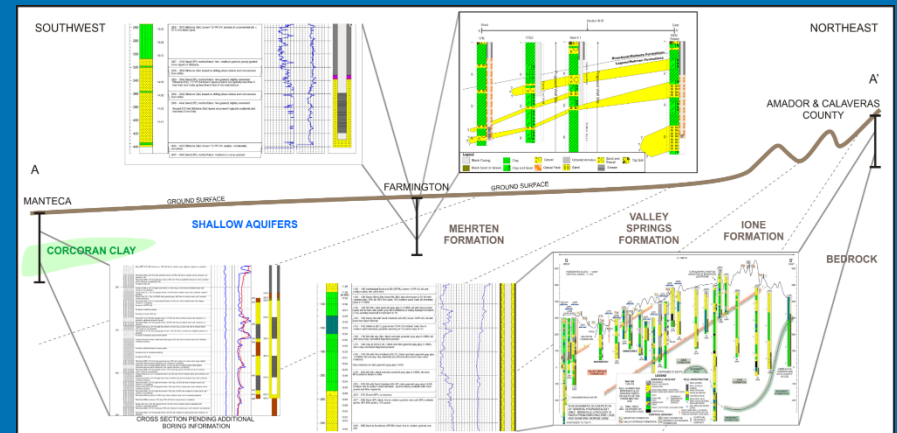
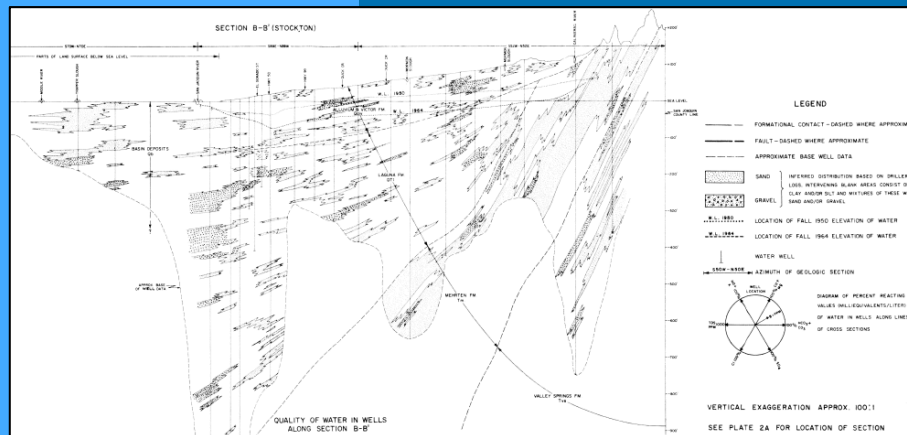
# HCM Development – Past Work



Existing basin-wide figures include:

1. DWR Cross Section from 1967
  - Basic schematic

2. NV5 Cross Section
  - Overview of well logs and cross sections done throughout the ESJ Subbasin





# HCM Development – Basic Process



The process of creating cross sections and other HCM figures comprises 3 basic steps.

## Wells and Logs

- Obtaining well logs from various sources.
- Comparing spatial distribution of wells for usefulness in HCM.

## Examining Data

- Documenting well log data, such as construction and lithological information.
- Organizing data for use in GIS software and DMS.

## Figure Generation

- Producing cross sections and 3D figures of subsurface geology and groundwater conditions via GIS software.



# DWR Update

# Technical Support Services Funding Update



- Draft application being submitted



# August Board Topics

# August Board Topics



- Minimum Thresholds
- GSP Development Update
- Workgroup Update
- Public Workshop



# Facilitator Transition



**EASTERN SAN JOAQUIN  
GROUNDWATER AUTHORITY**

# **GWA Board Meeting July 11, 2018**