

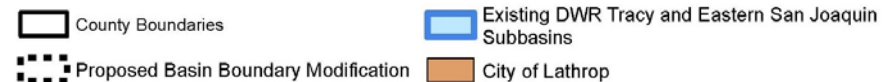
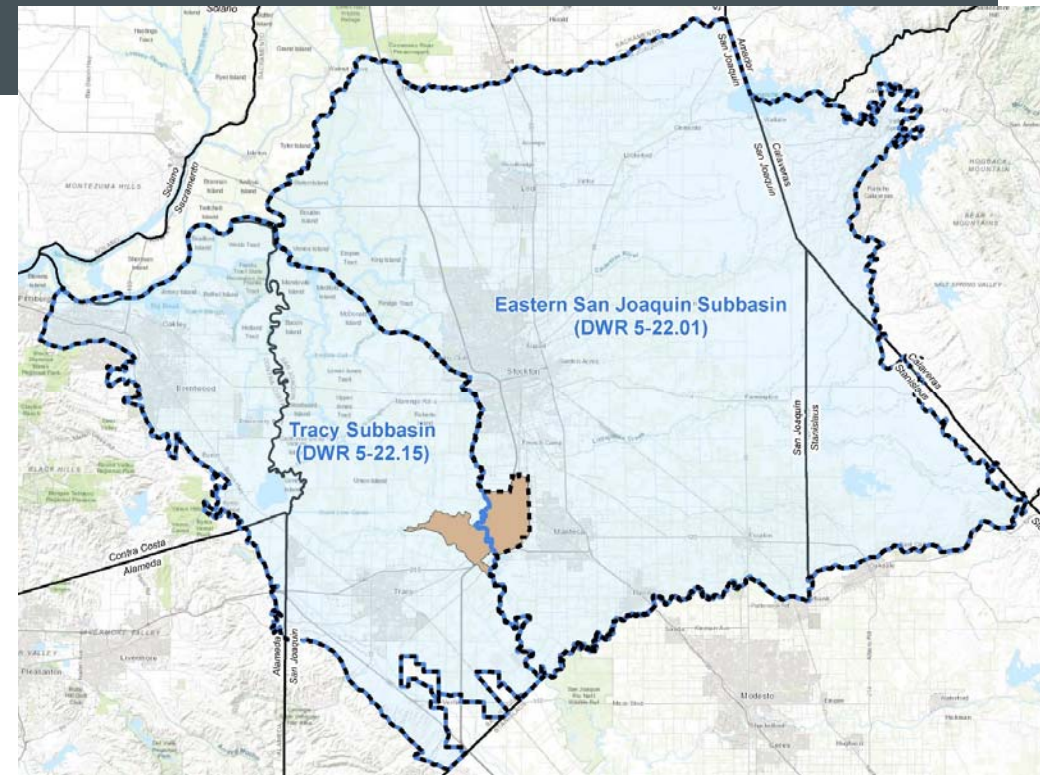


# CITY OF LATHROP BASIN BOUNDARY MODIFICATION REQUEST

EASTERN SAN JOAQUIN GROUNDWATER AUTHORITY  
BOARD OF DIRECTORS MEETING  
11 APRIL 2018

# INTRODUCTION

- The City of Lathrop straddles two groundwater basins.
  - Tracy Subbasin
  - Eastern San Joaquin
- The City serves customers in both basins.
- The City conducts groundwater recharge in both basins.
- The City is proposing a Basin Boundary Modification (BBM) to include the entire City in the Tracy Subbasin



# GROUNDWATER LEVELS IN AND PROXIMATE TO THE CITY HAVE BEEN EITHER STABLE OR INCREASING

Spring 2007 – Spring 2017  
Groundwater Elevation Change

DWR GROUNDWATER INFORMATION CENTER

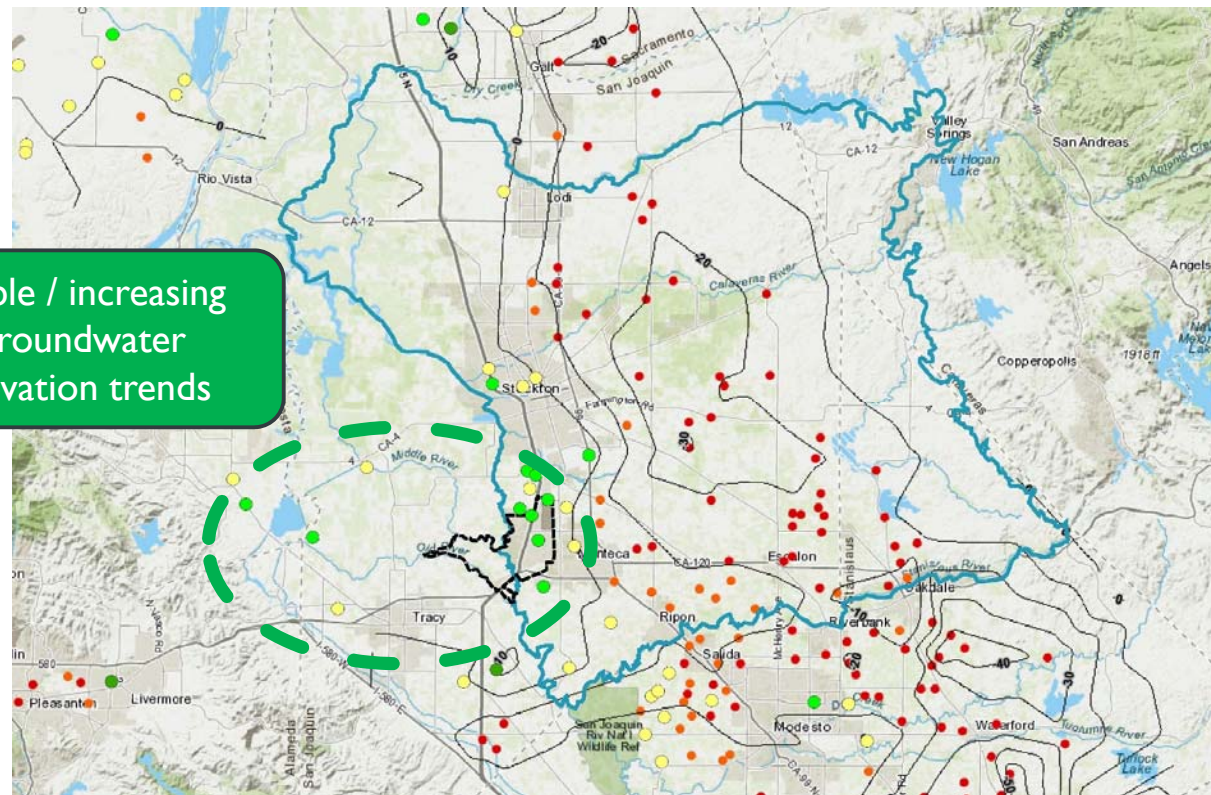
## ☑ Points

- Increase > 10 feet
- Increase 10 to 2.5 feet
- Change +/- 2.5 feet
- Decrease 2.5-10 feet
- Decrease > 10 feet

## ☑ Contours

— Groundwater Level Change (ft)

Stable / increasing groundwater elevation trends



## WHY LATHROP IS PURSUING A BBM

- With the current boundary, the City would need to support two GSAs, two GSPs, and on-going management of two different basins.
- The proposed BBM will
  - Allow a single GSA and GSP to cover the entire City;
  - Support the interests of the City and its water customers;
  - Consolidate the City into the Tracy Subbasin, which has more similar characteristics and conditions as are found in the City; and
  - Increase the City's ability to efficiently and sustainably manage groundwater.

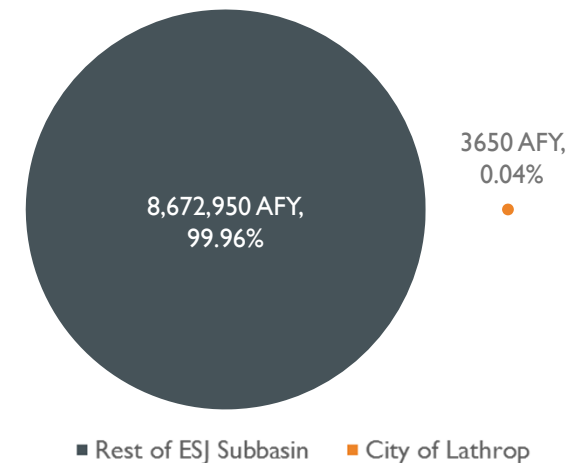
## LATHROP'S PROPOSED BBM ALIGNS WITH DWR'S DESIGN OF BBM REGULATIONS

- The DWR BBM Regulations exactly anticipated these kinds of jurisdictional changes.
- During last BBM round, 25 jurisdictional requests were approved, including for the Tracy and ESJ Subbasins.
- There is a lot of precedent for this kind of request
  - DWR has approved multiple BBM requests to avoid splitting an agency into two basins.
  - A previously approved BBM also diverged the Tracy Subbasin boundary from the San Joaquin River.

## THE PROPOSED BBM WILL HAVE MINIMAL IMPACT ON SGMA COMPLIANCE IN EITHER BASIN

- The City is a very small portion of either basin in terms of land use or groundwater pumping.
- The City is not causing or contributing to overdraft.
- The City has invested in reliable surface water supply to meet up to 70% of its projected water demands. The City does not have any plans to install new groundwater wells.
- The San Joaquin River is not a barrier to groundwater flow. The hydrogeology is continuous at the current subbasin “boundary”.

Groundwater Pumping (AFY)



Groundwater pumping volume for the ESJ basin is obtained from the ESJ Groundwater Management Plan.

# QUESTIONS?

Stephen Salvatore  
City of Lathrop  
[ssalvatore@ci.lathrop.ca.us](mailto:ssalvatore@ci.lathrop.ca.us)  
(209) 941-7220

Anona Dutton, P.G., C.Hg.  
EKI Environment & Water, Inc.  
[adutton@ekiconsult.com](mailto:adutton@ekiconsult.com)  
650-292-9100

